

# Special Interest Group on Computational Pathology

## Mission

*Advance the field of **computational pathology** by bringing together researchers, clinicians, and industry partners. We aim to accelerate the development and translation of AI and image analysis methods into clinical practice, improving diagnosis, prognosis, and treatment decisions worldwide.*

## Goals

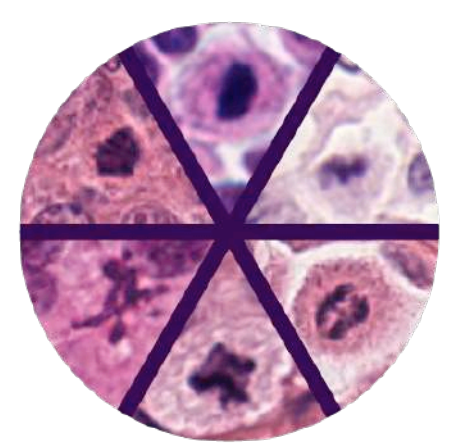
- **Unite experts** across academia, clinics, and industry to drive innovation in digital and computational pathology.
- **Develop standards & best practices** for data, algorithms, and evaluation to ensure reproducibility and quality.
- **Bridge research and clinical care** by promoting translation of computational methods into real-world medical workflows.
- **Foster global collaboration** through inclusive networking, workshops, and community-building activities.

## SIG-CompPath Contributions 🏆:

We recognize excellence and support the computational pathology community by providing the following:

### 🔬 MICCAI 2025 Pathology Challenge Awards:

Award of \$500 for each of the following MICCAI pathology challenges:



**MIDOG**

Sept. 23  
AM | IBS



**REG**

Sept. 27  
AM | DCC 1



**CHIMERA**

Sept. 23  
PM | IBS



**UNICORN**

Sept. 23  
AM+PM | DCC1



**BraTS-Path**

Sept. 23  
AM+PM | DCC1

### 🔬 Best MICCAI 2025 Computational Pathology Paper Awards:

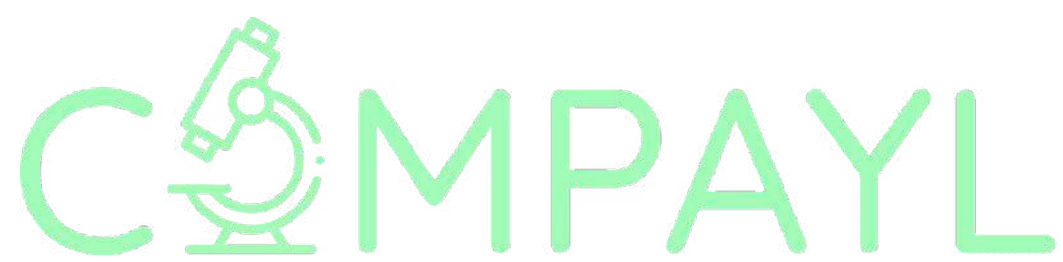
- 🥇 1st Place: \$500
- 🥈 2nd Place: \$300
- 🥉 3rd Place: \$200

Winners will be announced at MICCAI



### 🔬 Connecting Communities:

Facilitating synergies with other societies (e.g. European Society of Digital and Integrative Pathology) during the COMPAYL workshop



Sept. 27 - AM | DCC 1

## Coming Soon:

We are excited to announce upcoming initiatives designed to **strengthen and grow the computational pathology community**:

- 📄 **Position Papers** on key topics in Computational Pathology
- ☀️ **Summer School** for training the next generation of researchers
- 👥 **Workshops & Community Events** at MICCAI and beyond
- ➕ **And more initiatives to support collaboration, education, & innovation!**

## Board Members



Spyridon Bakas  
(President)



Francesco Ciampi  
(Vice President)



Anne Martel  
(Treasurer)



Jana Lipkova



Geert Litjens



Nasir Rajpoot



Joe Yeong



This could be you

## Board Member Open Position

We invite applications for an open **SIG-CompPath Board Member** role. The selected professional will contribute to the strategic direction and governance of the group, helping shape the future of computational pathology research and education within the global MICCAI community.

### 📄 Submit a single PDF including:

1. Cover Letter (max 2 pages) – your interest, experience, and vision for advancing computational pathology
2. Curriculum Vitae – including publications, grants, & service activities

Shortlisted candidates will be invited for a virtual interview. Selection will emphasize research excellence, community engagement, and commitment to the field.

✉️ Submit applications and inquires to:  
**sigcomppath@miccai.org**

## Get in touch:

✉️ Email: [sigcomppath@miccai.org](mailto:sigcomppath@miccai.org)

### Join Our Mailing List:

Scan the QR codes below to subscribe and stay updated!

✉️ Mailing List



🌐 LinkedIn



🌐 Website

